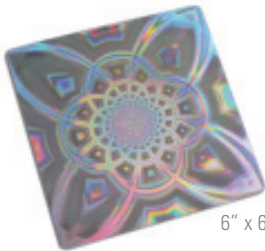


VIBRATIONAL ENERGY PRODUCTS

for CLEARING TOXINS in MATERIALS & SUBSTANCES

Dimensional Design Products, Inc

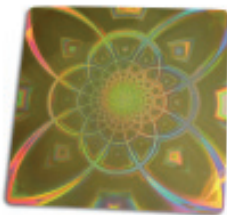


6" x 6" card

NEUTRALIZER

This 6" silver holographic card can be used on toxic items in your environment. It clears the negative energetic effects of a broad range of toxins and energetically repolarizes many materials so they are no longer harmful. Can be used on fabrics, cosmetics, jewelry, eye glasses, watches, body care products, medications and liquids etc. The life force potential of anything placed on this card will be raised.

\$74.95



Large 6" x 6" card

for the Kitchen
clears 6 feet

FOOD LIQUID ENERGIZER to clear toxins & raise the vitality

The Food / Liquid Energizer is used to neutralize the energy imbalances from toxic residues in foods and liquids and to raise the positive energy, vitality and nutritional value of these substances. It cancels out interfering radiations which have lodged in your food, water and other beverages. When the vibratory level of the energy in food, liquids or supplements are heightened the nutritional value is enhanced. Also restores energy patterns to 100%. Great for any vibrational formula you may have ie, homeopathics, flower essences etc.

\$74.95
large
framed



for Personal Use
clears 2 feet

2" x 3"

The **large card** is perfect for use in the kitchen to clear groceries or food that is being prepared within a 6 foot area. It is in a plexiglass frame.
The **small card** is great for travel or carrying with you when dining out and clears items within a 2 foot area.

\$44.95
small card

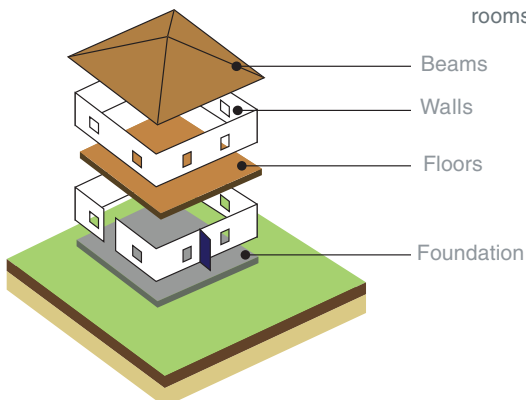


size 2" x 2"

RESONATOR Transform Major Building Materials & Furnishings

When samples or materials are treated with the Resonator patch, toxic energies are transmuted into beneficial energies. The Resonator affects any material or sample that is in perfect resonance (same exact qualities ie., shape color material) with the material that is being directly treated. The correcting energy process from the Resonator immediately transfers to the materials with the same qualities). Use a Resonator on a material that covers large areas or where there are multiples of the same thing (ex. tile). Resonator patch in each of the 4 corners of the basement or as close to the ground floor as possible help to convert any toxic fields emitted from the ground under the building impacting the rooms above.

\$29.95
3 pack



Examples of areas: Single Resonator patch required

- Tile or wood floor** – Single tile or sample of the wood
- Windows** – Single pane of glass - same shape and material
- Mirrors** – Place on the back of a mirror
- Rugs and carpets** – back or front of wall to wall
- Painted walls or wallpaper** – each color or pattern
- Drapes** – made with the same fabric
- Cupboards** – similar shelves